

LEGEND

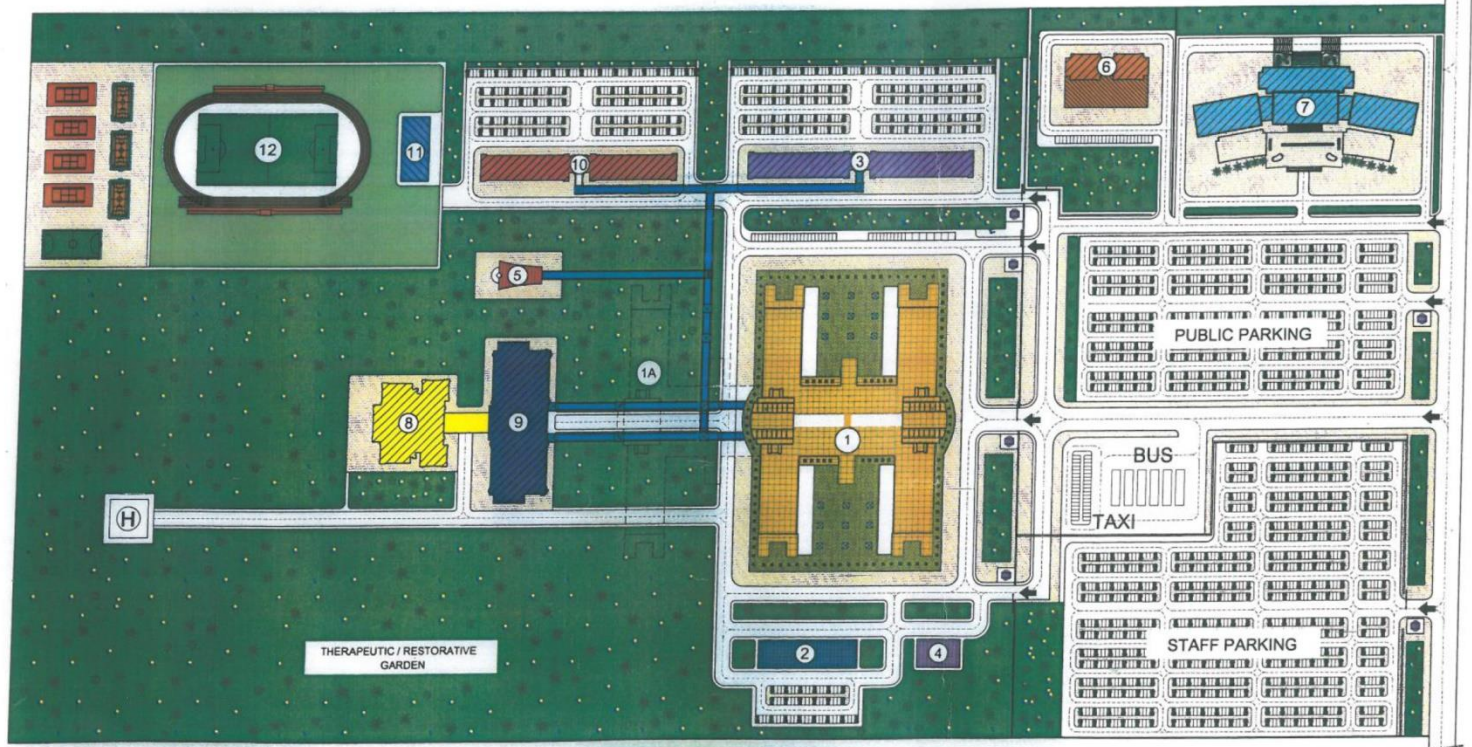
BUILDINGS OF THE MAIN PROJECT

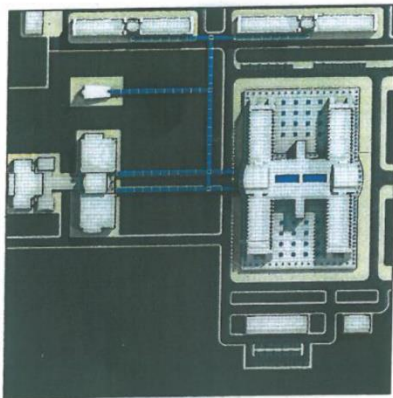
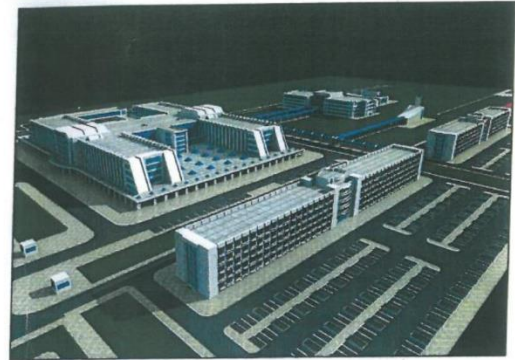
(WORKS OF THE FIRST PHASE)

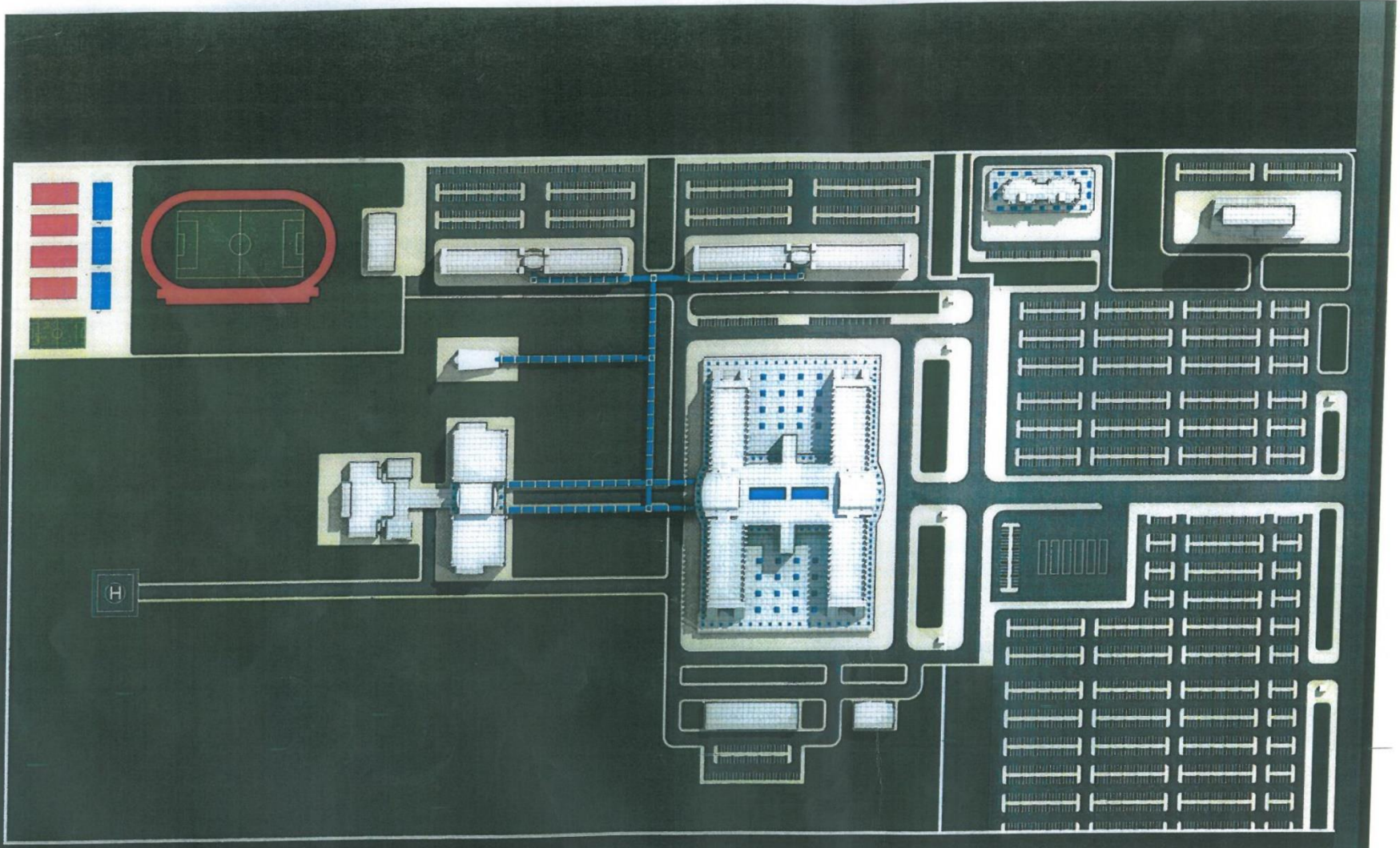
1	MAIN HOSPITAL
1A	MAIN HOSPITAL : FUTURE EXPANSION AREA
2	NON MEDICAL SUPPORT SERVICES
4	WASTE STORAGE BUILDING
5	MOSQUE

BUILDINGS AND WORKS IN THE SERVICE OF THE UNIVERSITY AND HOSPITAL (FUTURE PREVISION)

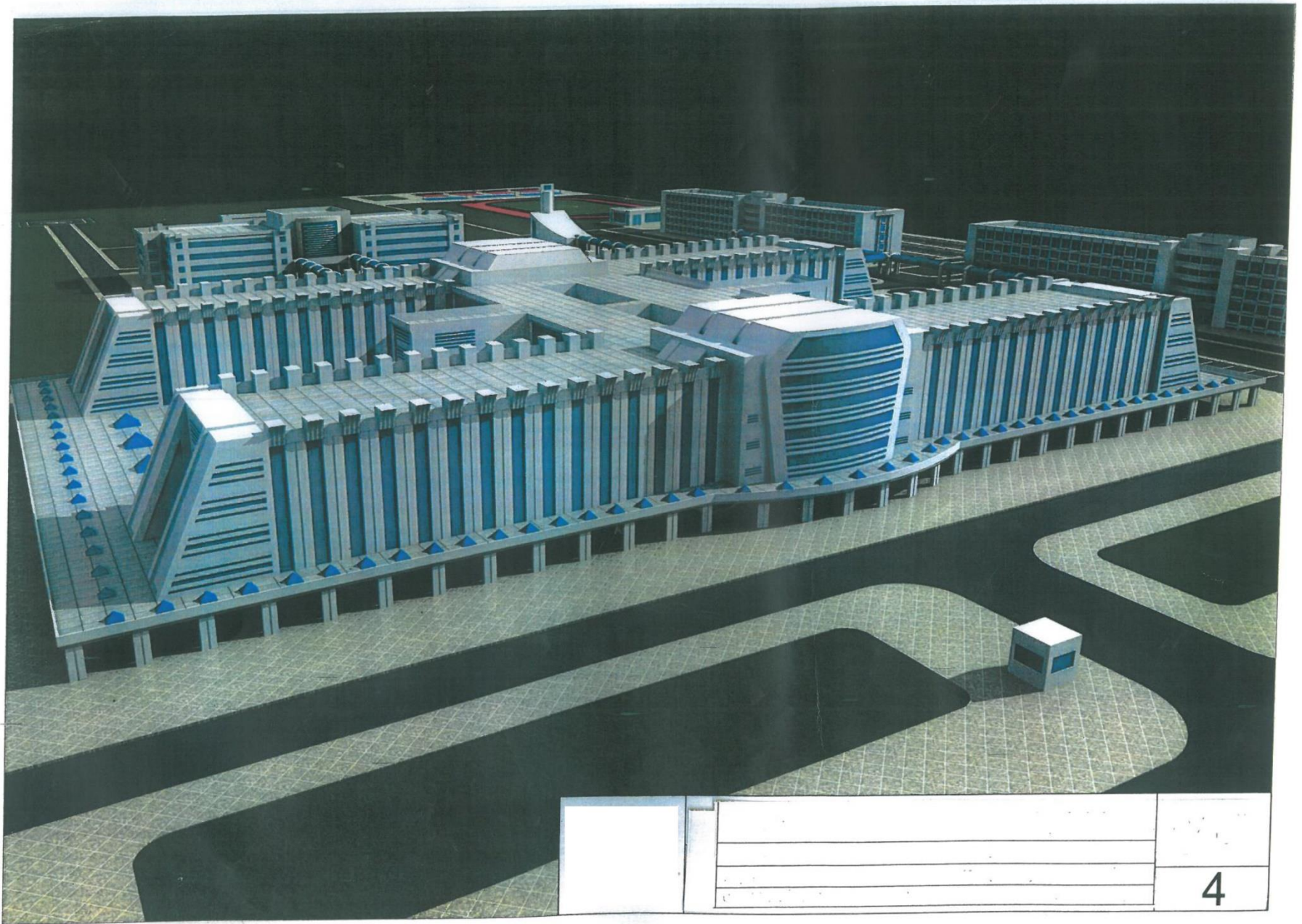
3	STAFF ACCOMMODATIONS : BEDS FOR TECHNICIANS AND VISITING PROFESSORS (n.600)
6	ESSENTIAL STAFF HOUSING (n. 20 houses)
7	CRECHES / NURSERY FOR VISITORS AND RELATIVES
8	VISITORS - RELATIVES HOTEL : n.300 rooms
9	CONFERENCE CENTER
10	CLASSROOMS AND ACCADEMIC OFFICES
11	STUDENTS ACCOMMODATIONS : (n.300 beds)
12	RECREATIONAL AND WELLNESS CENTER







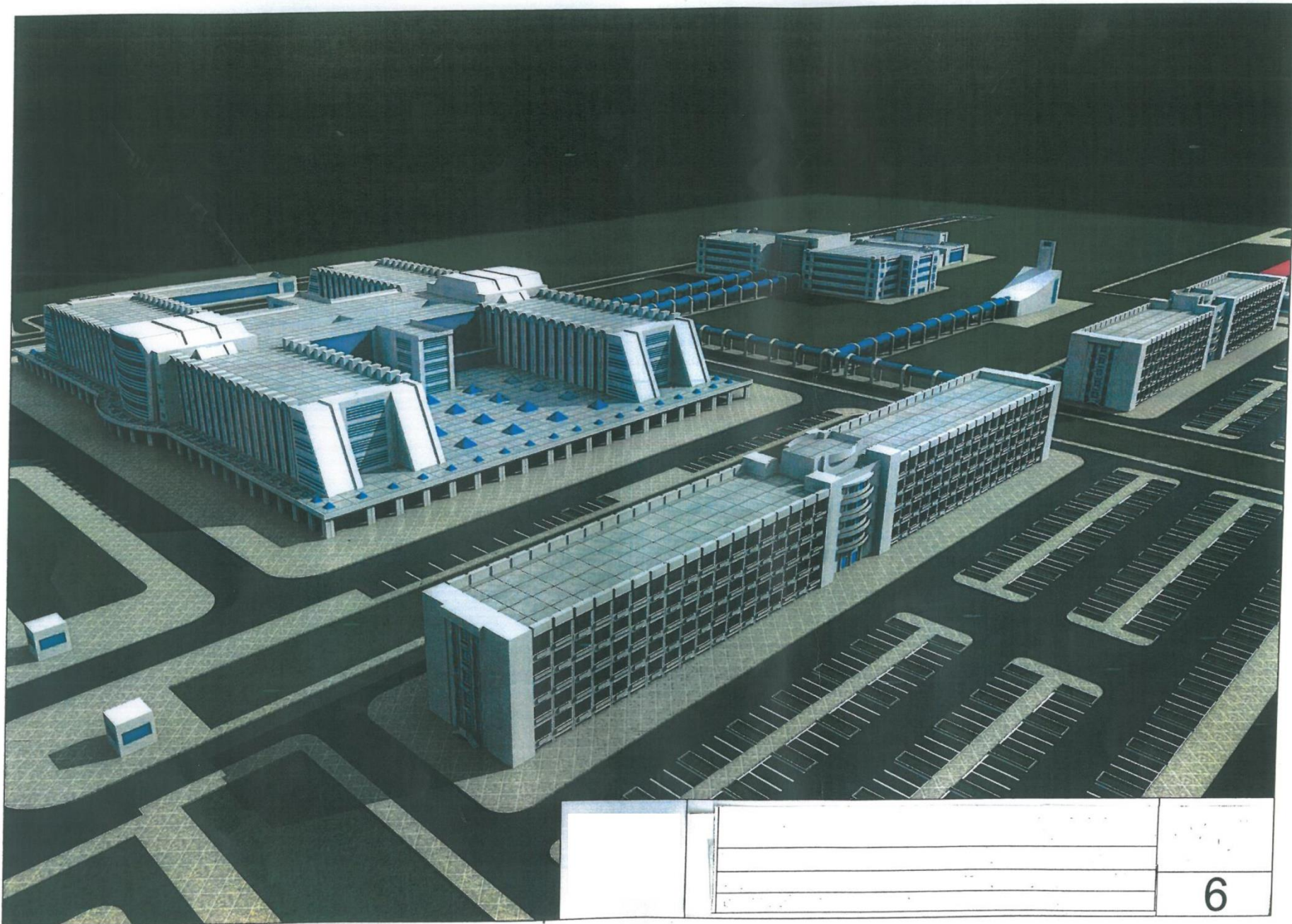
		3



		4

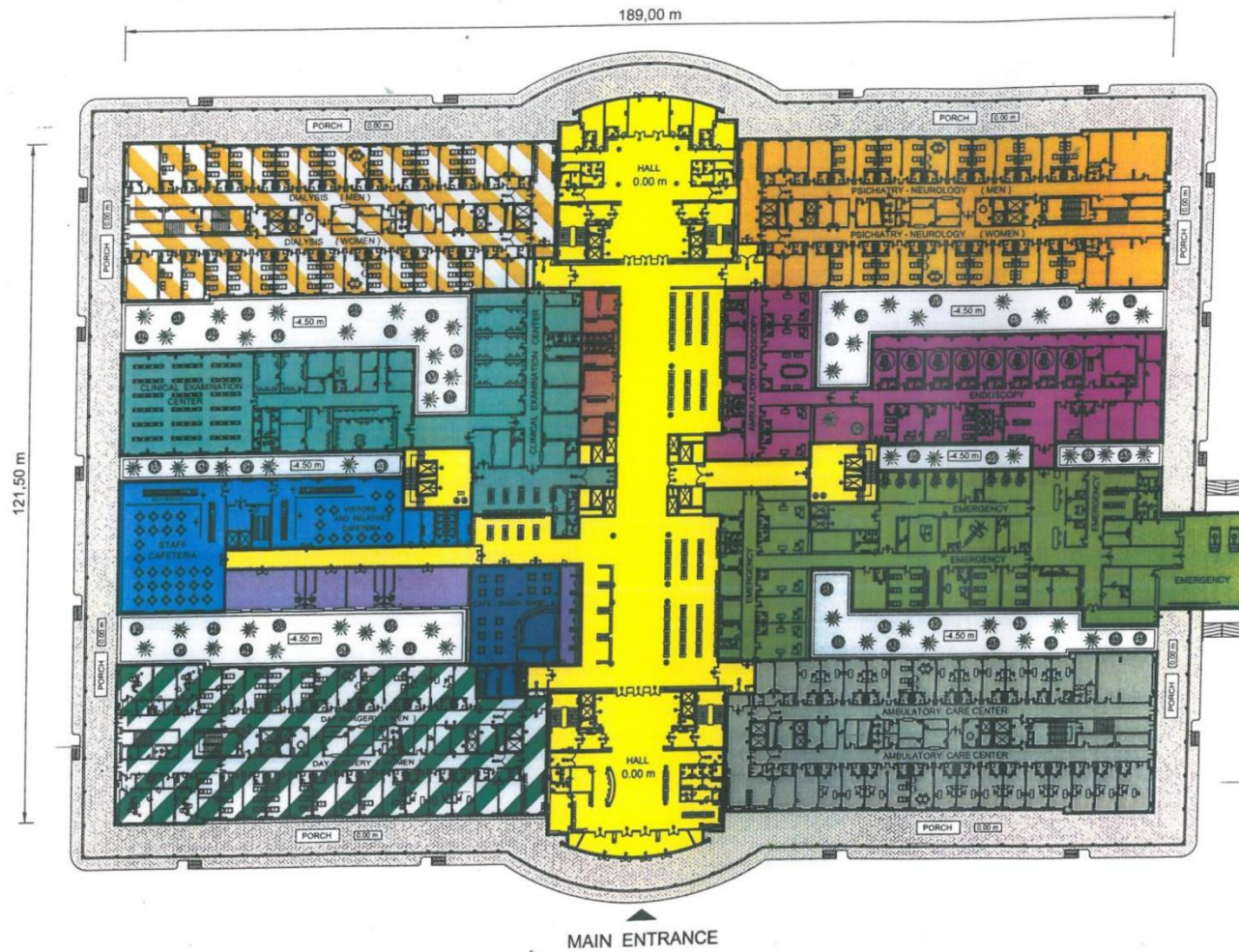


			5



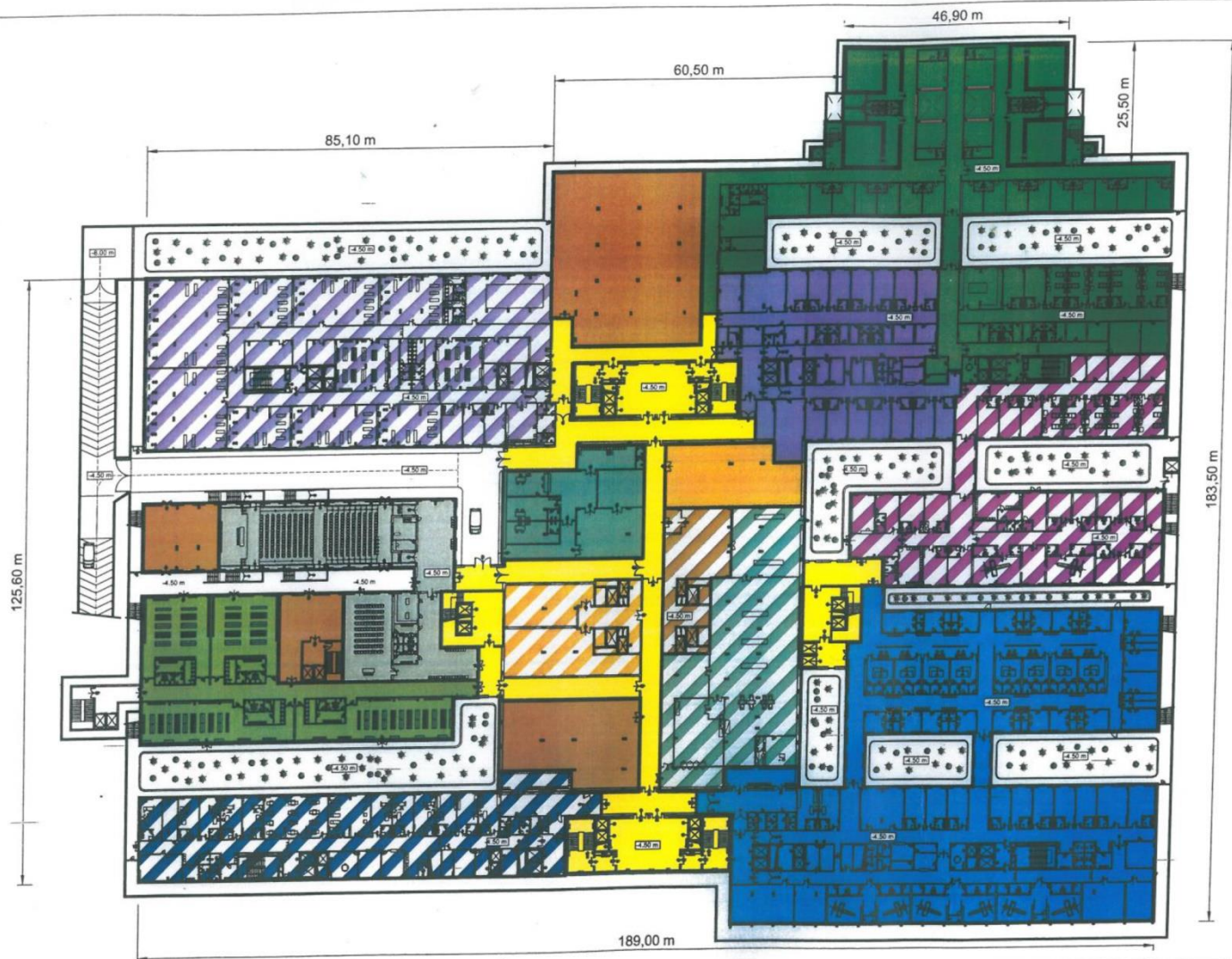


		7



GROUND LEVEL PLAN

LEGEND	
	HORIZONTAL AND VERTICAL CONNECTIVE SPACES
	EMERGENCY
	ENDOSCOPY
	PSYCHIATRY - NEUROLOGY
	DIALYSIS
	AMBULATORY CARE CENTER
	CLINICAL EXAMINATION CENTER
	DAY SURGERY
	OFFICES
	CAFETERIA
	CAFE - SNACK SHOP
	ADMISSION AND REVENUE COLLECTION UNIT
	STORES
	POSTAL SERVICES AND-ATM
	OPEN GREEN SPACES (-4.50 m)



LEGEND	
	BLOOD BANK
	HOSPITAL MEDICAL STORE
	CENTRAL STERILE SUPPLY
	HEALTH PHYSICS
	REHABILITATION
	NUCLEAR MEDICINE
	RADIODTHERAPY
	RADIOLOGY
	CONFERENCE ROOMS MEETING ROOMS
	STAFF CHANGING ROOMS
	DIRTY DEPOSIT
	CLEAN DEPOSIT
	DEPOSITS
	ARCHIVES
	HORIZONTAL AND VERTICAL CONNECTIVE SPACES
	OPEN GREEN SPACES

UNDERGROUND -1 LEVEL PLAN (- 4.50m)


LEGEND

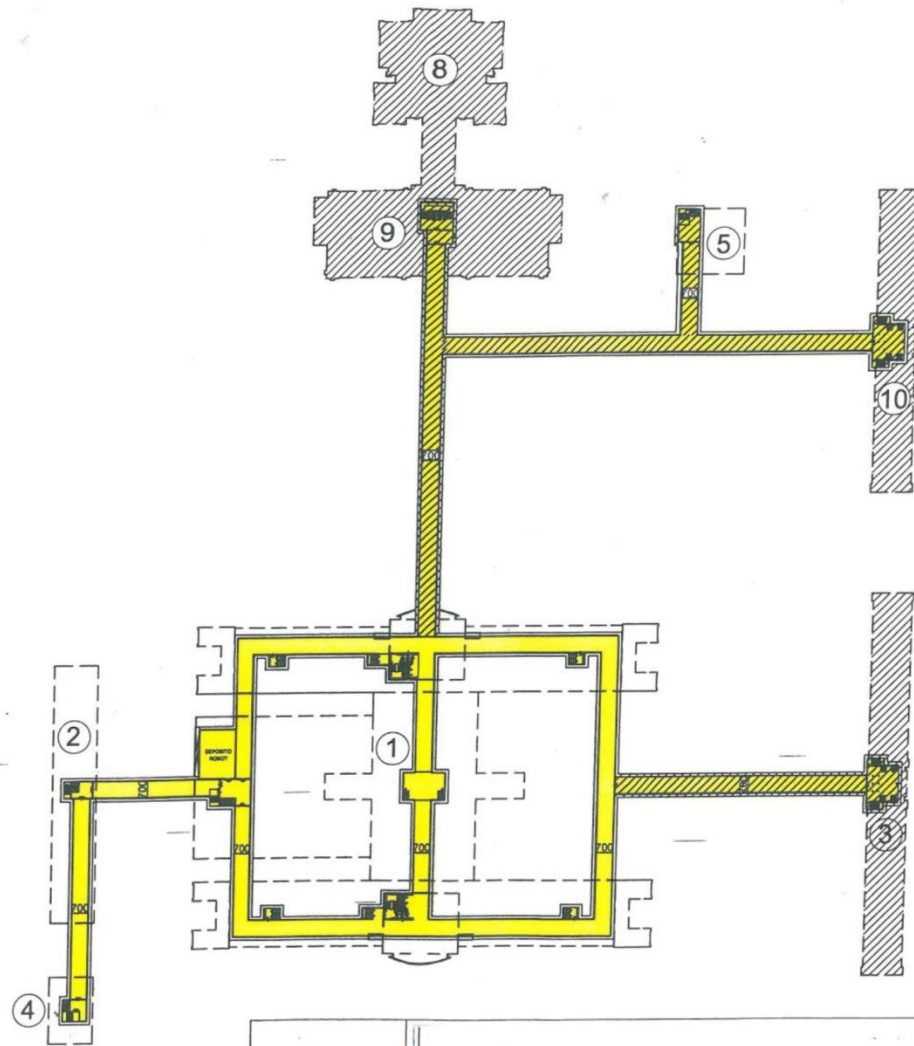
BUILDINGS OF THE MAIN PROJECT

- ① MAIN HOSPITAL
- ② NON MEDICAL SUPPORT SERVICES
- ④ WASTE STORAGE BUILDING
- ⑤ MOSQUE

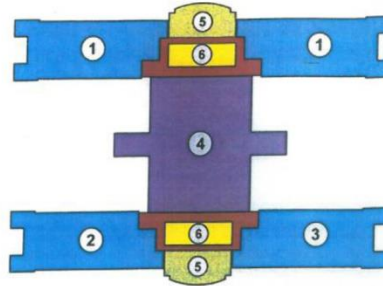
BUILDINGS AND WORKS IN THE SERVICE OF THE UNIVERSITY AND HOSPITAL

- ③ STAFF ACCOMMODATIONS : (n.600) BEDS FOR TECHNICIANS AND VISITING PROFESSORS
- ⑧ CONFERENCE CENTER
- ⑨ CLASSROOMS AND ACCADEMIC OFFICES
- ⑩ STUDENTS ACCOMMODATIONS : (n. 300 beds)

 CONNECTING AREA AT -2 LEVEL (-8.00 m)
(FUTURE PREVISION)



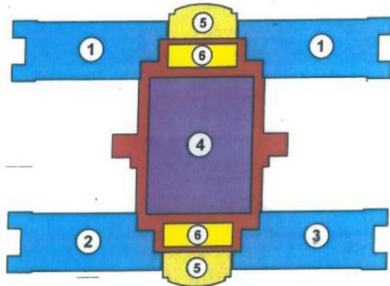
2nd FLOOR



2 nd FLOOR		BEDS
1	- GENERAL MEDICAL WARD	60
2	- HEMATOLOGY - ONCOLOGY	30
3	- MAXILLOFACIAL DENTISTRY - PLASTIC SURGERY	30
TOT.		120

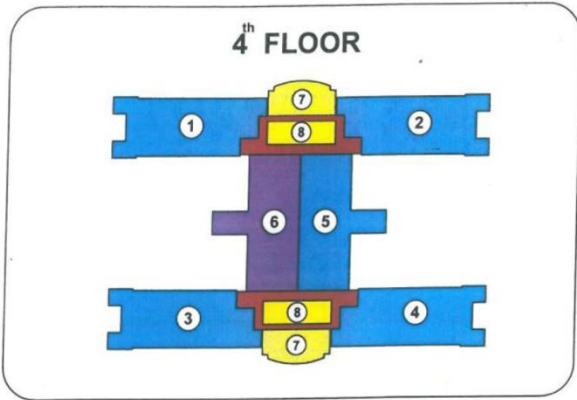
4	SURGICAL UNIT : n. 6 OPERATION THEATERS
5	OUTPATIENT VISITS AREA
6	VISITORS AND RELATIVES WAITING AREA RESERVED
	MEDICAL STAFF ROUTE RESERVED

1st FLOOR



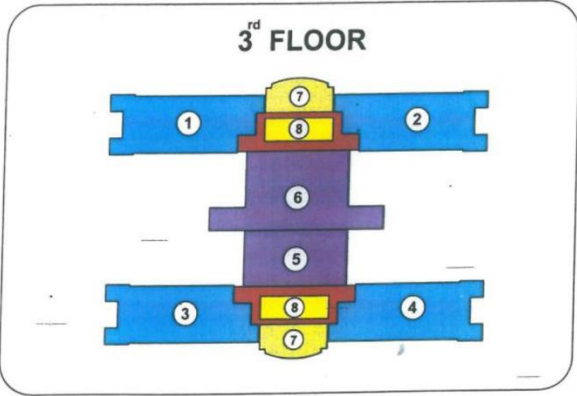
1 st FLOOR		BEDS
1	- GENERAL SURGERY	60
2	- ORTHOPEDIC	30
3	- RIANIMATION - STROKE UNIT	28
TOT.		118

4	SURGICAL UNIT : n. 6 OPERATION THEATERS
5	OUTPATIENT VISITS AREA
6	VISITORS AND RELATIVES WAITING AREA RESERVED
	MEDICAL STAFF ROUTE RESERVED



4 th FLOOR		BEDS
1	- OPHTHALMOLOGY	28
2	- PEDIATRIC	28
3	- INFECTIOUS DISEASES	30
4	- NEPHROLOGY	26
5	- OBSTETRICS (DERMATOLOGY WOMEN)	26
TOT.		138

6	BIRTH UNIT : N 4 DELIVERY ROOMS N 1 WATER BIRTH N 1 OPERATION THEATERS N 4 LABOUR ROOMS
7	OUTPATIENT VISITS AREA
8	VISITORS AND RELATIVES WAITING AREA RESERVED
8	MEDICAL STAFF ROUTE RESERVED



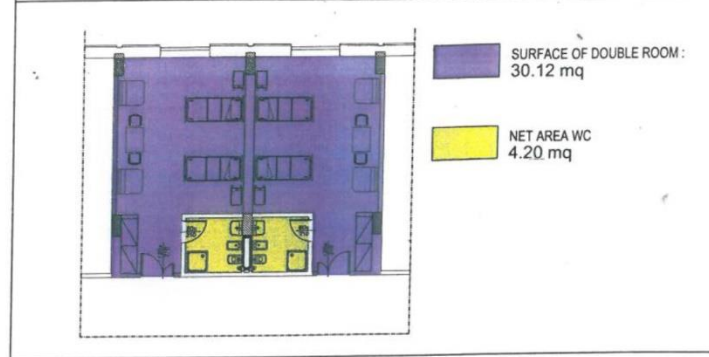
3 rd FLOOR		BEDS
1	- CARDIOLOGY (INPATIENT) - CARDIAC SURGERY	32
2	- CARDIOLOGY (INTENSIVE) - CARDIOLOGY (CICU)	32
3	- UROLOGY (DERMATOLOGY MEN)	30
4	- OTOLARYNGOLOGY	30
5	SURGICAL UNIT: - INTENSIVE CARE UNIT - SUB-INTENSIVE THERAPY	12 12
TOT.		148

6	HEMODINAMIC : n. 1 HEMODINAMIC ROOMS n. 1 ANGIOGRAPHY ROOMS n. 1 ELECTROPHYSIOLOGY ROOMS
7	OUTPATIENT VISITS AREA
8	VISITORS AND RELATIVES WAITING AREA RESERVED
8	MEDICAL STAFF ROUTE RESERVED

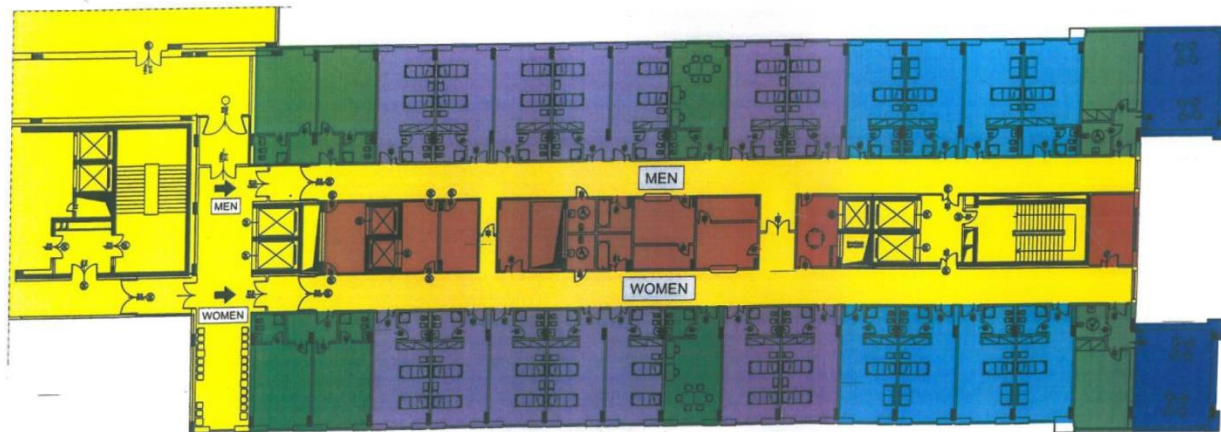
TOTAL BEDS	
4 th FLOOR	.138
3 rd FLOOR	148
2 nd FLOOR	120
1 st FLOOR	118
GROUND FLOOR :	
PSYCHIATRY - NEUROLOGY	32
DAY SURGERY	28
UNDERGROUND	
-1 LEVEL :	
RADIOTHERAPY	10
NUCLEAR MEDICINE	10
TOTAL : n. 604 BEDS	

			12

TYPICAL ROOM WITH TWO BEDS



HOSPITAL : TYPICAL WARD



- ROOMS WITH ONE BED
- CONNECTIVE SPACES
- SUPPORT SERVICES
- ROOMS WITH TWO BEDS
- SPIRITUAL AREA
- NURSES AND DOCTORS AREA
- INPATIENT LIVING ROOM

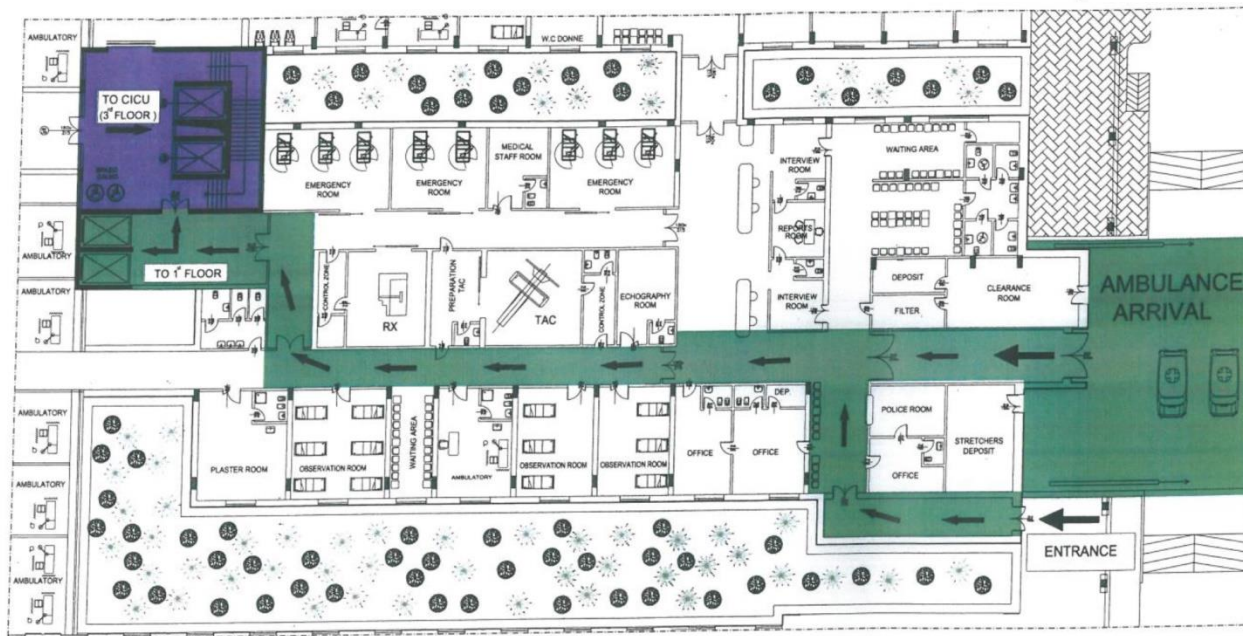
SURGICAL UNIT : TYPICAL FLOOR PLAN (n. 6 OPERATION THEATERS)

- OPERATION THEATERS AND WAKE ZONE
- NURSES ; ANESTHETISTS ; DOCTORS AND SUPPORT SERVICES AREA
- CHANGING ROOMS
- SUB-STERILIZATION AREA

- STERILIZED DEPOSITS
- CONNECTIVE SPACES
- DIRTY HALLWAY AND DEPOSITS
- DEPOSITS AND SUPPORT SERVICES

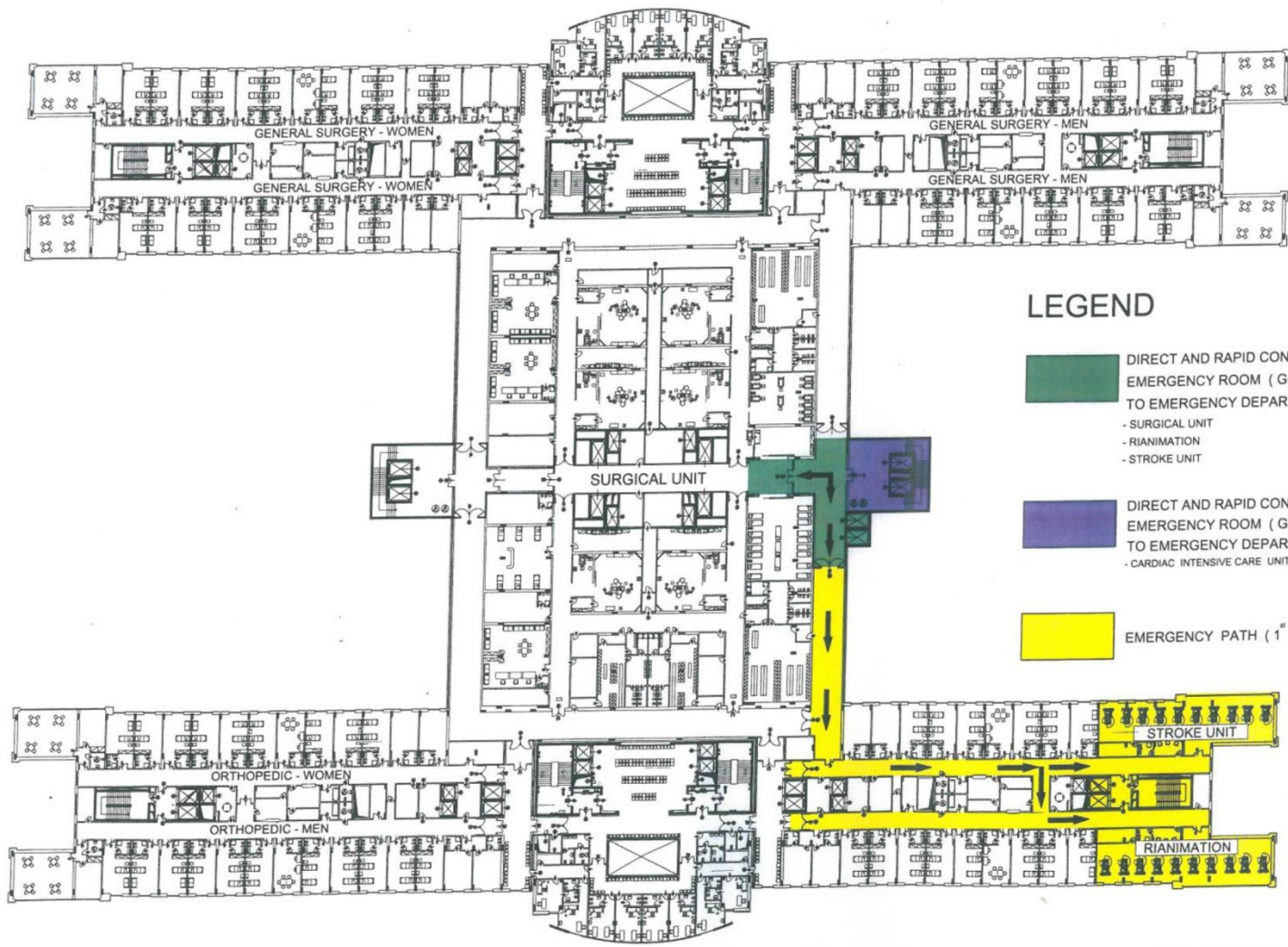


COMPLEX OPERATION THEATERS
1 st FLOOR : n. 6 OPER. TH.
2 nd FLOOR : n. 6 OPER. TH.
TOTAL : n. 12 OPER. TH.



DIRECT AND RAPID CONNECTION FROM
 EMERGENCY ROOM (GROUND LEVEL)
 TO EMERGENCY DEPARTMENTS (1st FLOOR) :
 - SURGICAL UNIT
 - RIANIMATION
 - STROKE UNIT

DIRECT AND RAPID CONNECTION FROM
 EMERGENCY ROOM (GROUND LEVEL)
 TO EMERGENCY DEPARTMENT (3rd FLOOR) :
 - CARDIAC INTENSIVE CARE UNIT (CICU)

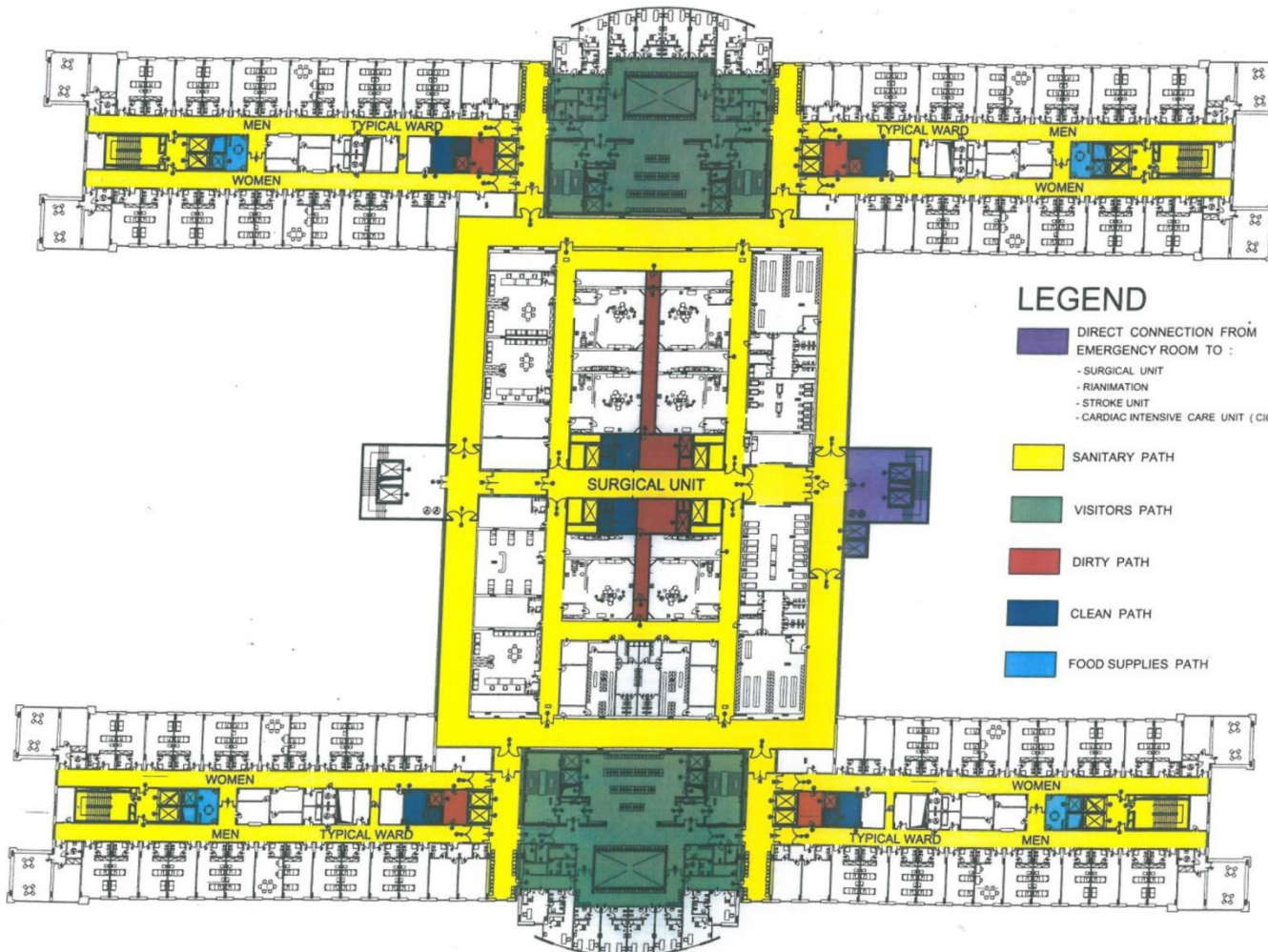


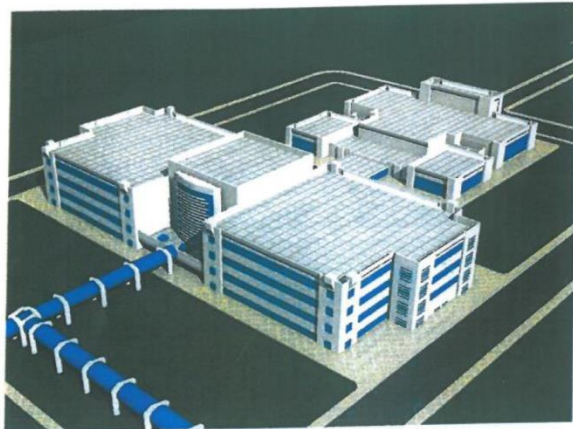
LEGEND

- DIRECT AND RAPID CONNECTION FROM EMERGENCY ROOM (GROUND LEVEL) TO EMERGENCY DEPARTMENTS (1st FLOOR) :
 - SURGICAL UNIT
 - RIANIMATION
 - STROKE UNIT

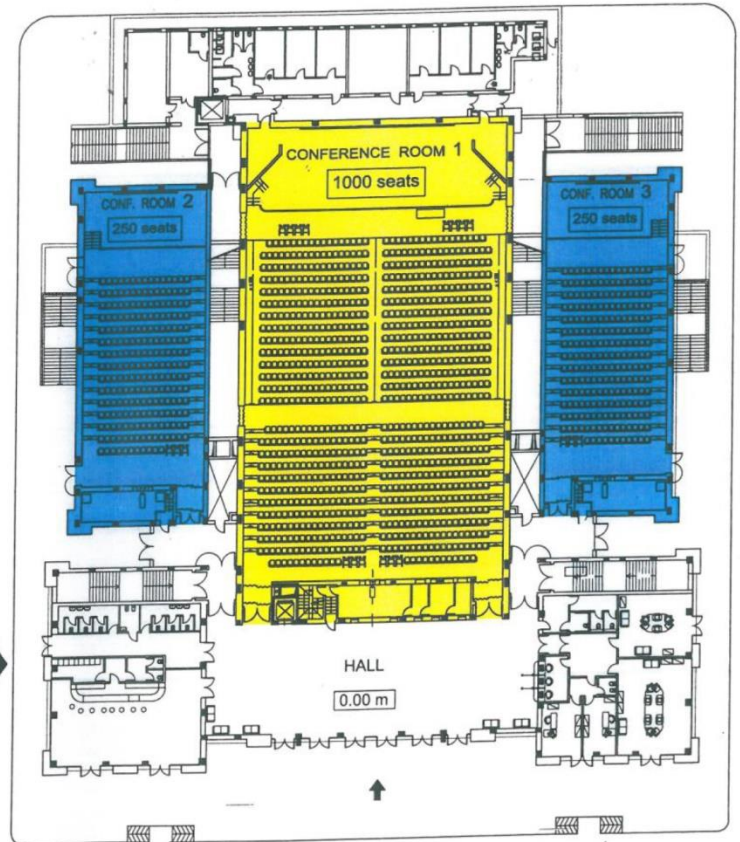
- DIRECT AND RAPID CONNECTION FROM EMERGENCY ROOM (GROUND LEVEL) TO EMERGENCY DEPARTMENT (3rd FLOOR) :
 - CARDIAC INTENSIVE CARE UNIT (CICU)

- EMERGENCY PATH (1st FLOOR) :





PERSPECTIVAL AERIAL VIEW



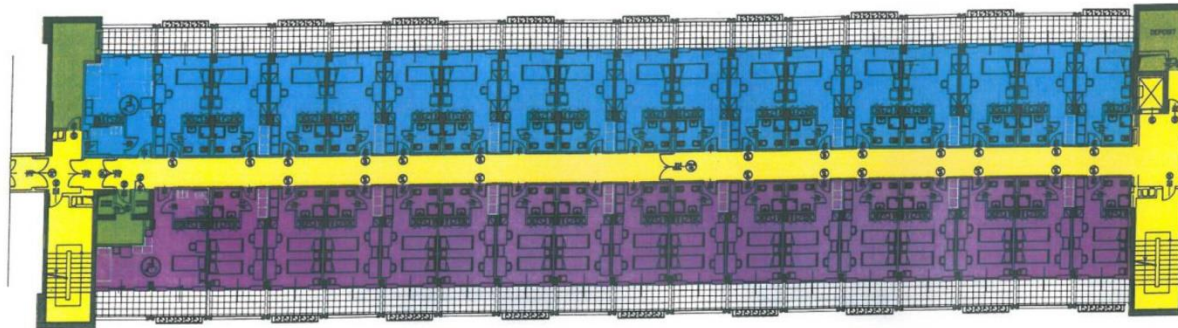
CONFERENCE CENTER →



← CLASSROOMS AND ACCADEMIC OFFICES : TYPICAL FLOOR PLAN

TYPICAL WING OF BUILDING PLAN

STAFF ACCOMMODATIONS : (n. 600 beds)



STAFF ACCOMMODATIONS

- nurses ,
 - technicians ,
 - vis. prof.
- n. 600 total beds

■ ROOMS WITH ONE BED

■ ROOMS WITH TWO BEDS

■ DEPOSITS

■ CONNECTIVE SPACES

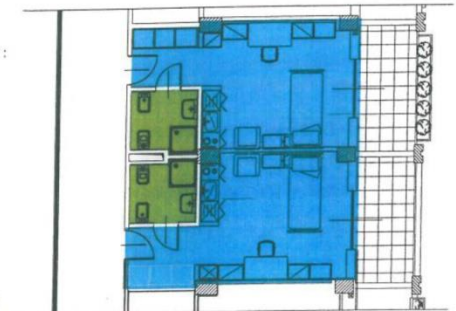


PERSPECTIVAL VIEW

TYPICAL ROOM WITH ONE BED

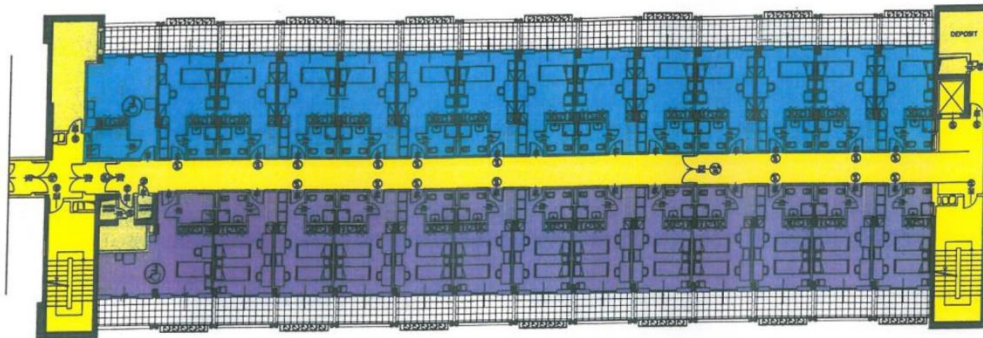
■ SURFACE SINGLE ROOM :
16.70 mq

■ NET AREA WC :
3.00 mq



TYPICAL WING OF BUILDING PLAN

STUDENTS ACCOMMODATIONS : (n.300 beds)



ROOMS WITH ONE BED

ROOMS WITH TWO BEDS

DEPOSITS

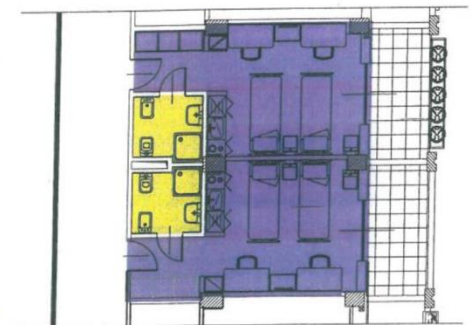
CONNECTIVE SPACES



TYPICAL ROOM WITH TWO BED

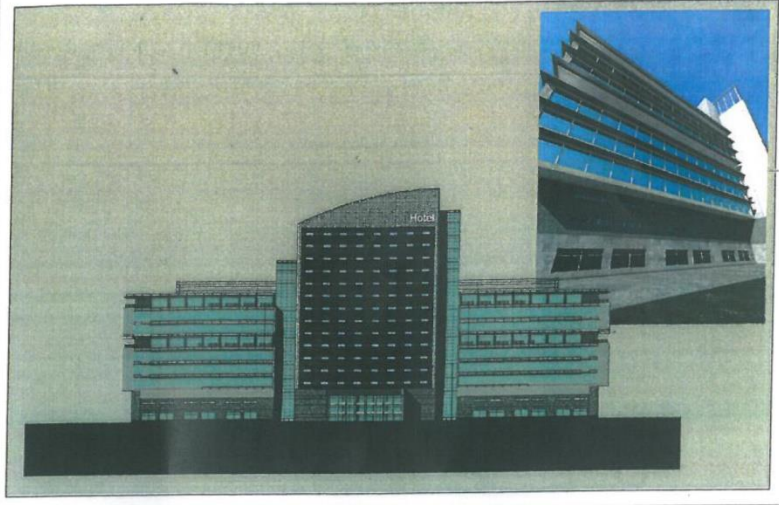
SURFACE ROOMS WITH TWO BEDS : 16.70 mq

NET AREA WC : 3.00 mq

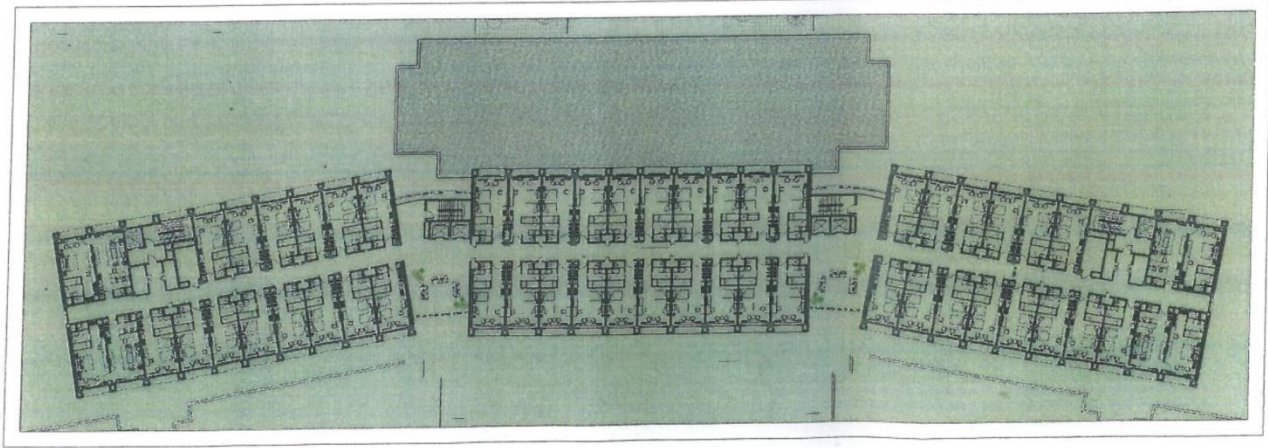




PERSPECTIVAL VIEW



PRINCIPAL FRONT



TYPICAL FLOOR PLAN
